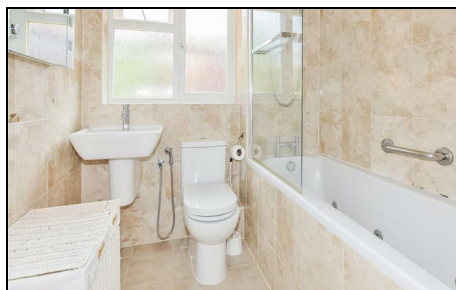


Kipling Drive Colliers Wood, SW19 1TL

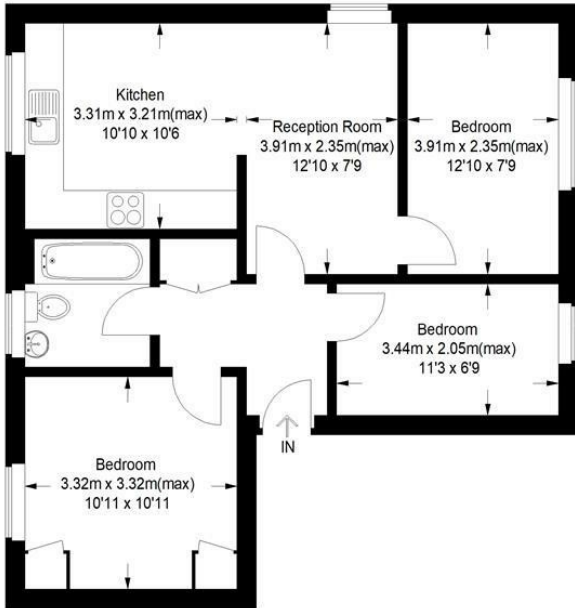
£375,000 Freehold



A well presented top floor three bedroom purpose built apartment near to transport. 900+year lease, no onward chain and allocated parking. A superb flat for a first time buyer or rental investor.

Kipling Drive, SW19

Approximate Gross Internal Area
59.7 sq m / 643 sq ft

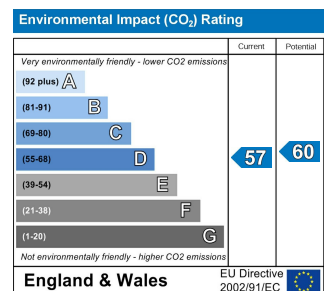
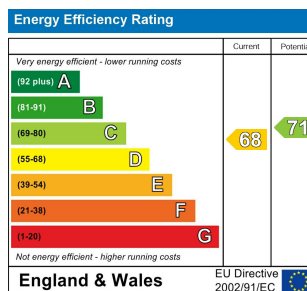


This floor plan is for representation purposes only and is not drawn to scale.
The Gross Internal Area includes outbuildings shown on the plan.

Whilst every attempt has been made to ensure the accuracy of the plan measurements of doors, windows and rooms are approximate only and should be checked before making any decisions reliant upon them.

Copyright Bespokeplans.co.uk (ID 458067)

- Three Bedrooms
- Purpose Built
- Open Plan
- Close to Transport Links
- EPC Rating D



For Free Mortgage Quote and Best Mortgage Rates, call an Ellisons Mortgage Advisor on 020 8544 0518



Although these particulars are believed to be correct, their accuracy is not guaranteed and they do not form part of any contract.

Celebrating 30 years of successful Sales and Lettings in Merton

